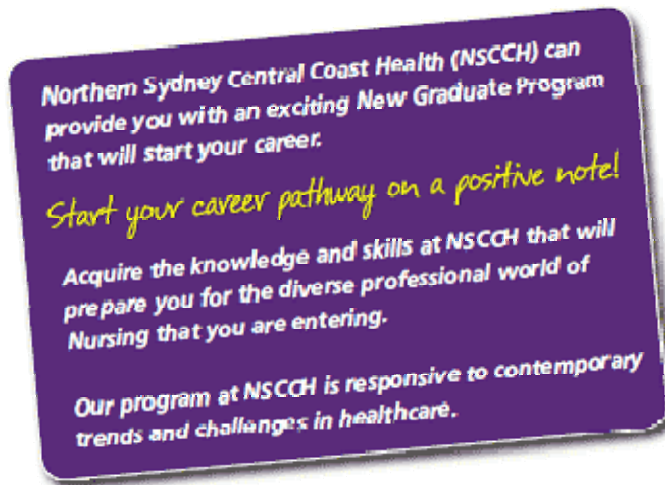


## NEW GRADUATE NURSES SEEKING EMPLOYMENT IN 2009



### The 12 month Program provides:

- Full-time and part-time positions;
- An individualised program to meet your needs;
- A supportive learning environment;
- Opportunities for clinical rotations;
- Performance review and development;
- Annual leave and
- Opportunities for employment on completion of the New Graduate Nurse Program.

### One Application Process

Visit our webpage:

<http://www.nursinginsydney.com.au>

Lodge your application online at:

[www.health.nsw.gov.au/nursing](http://www.health.nsw.gov.au/nursing)

### Join Our Program

Nominate Northern Sydney Central Coast Area Health Service as your first preference or alternatively list the hospitals within NSCCH on your application.

### Important Dates

#### Online Application Open

Wednesday 25<sup>th</sup> June 2008

#### Application Close

9am Monday 11<sup>th</sup> August 2008

#### Letter of Invitation to interview

Sent out on 28<sup>th</sup> August 2008

### Interview Dates for NSCCH

#### For first preference:

Tuesday 30<sup>th</sup> September, 1<sup>st</sup> and 2<sup>nd</sup> October 2008

#### Job offer Letters

Sent out on 7<sup>th</sup> of November 2008

Your Reply accepting or declining the offer is required by:

21<sup>st</sup> November 2008

### In 2009 NSCCH will be recruiting 299 New Graduates!

RNSH General ICU Peri-op	Midwifery RNSH	Hornsby	Manly/ Mona Vale	Central Coast Sector General	Gosford Midwifery	Gosford Crit Care	Wyong/ Long Jetty	Wyong Crit Care
100	6	19	26	54	9	8	26	1
Ryde	Mental Health: RNSH/ Ryde	Mental Health: Hornsby	Mental Health: Manly &Mona Vale	Mental Health: Macquarie Hospital	Mental Health: Central Coast	Royal Rehab Ryde	Gosford- Woy Woy	Hope Health Care
12	2	4	2	15	3	6	2	4